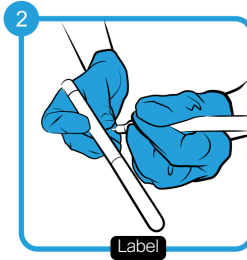


Environmental DNA Scat Sampling Instructions (Swab method)

Before you begin, please note that scats are a potential source of harmful pathogens. Wear gloves and wash your hands thoroughly after handling scats.



Gloves
Open the sampling kit and put the gloves on



Label
Clearly label sample with the site, date, and GPS co-ordinates



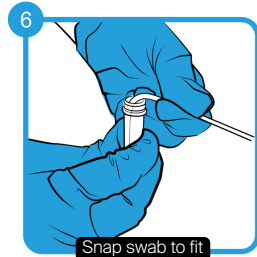
Wet swab with preservative
Open preservative and pre-wet the swab with preservation buffer



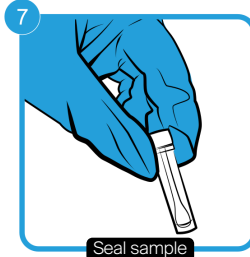
Swab scat
Swab scat lengthways 6-10 times, then break open scat and swab 6-10 times. Rotate swab so all sides are exposed



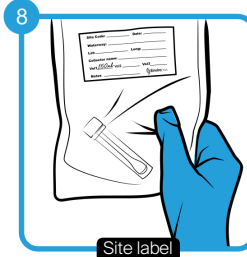
Place swab into preservative
Once swab is thoroughly exposed, place swab back into preservative buffer



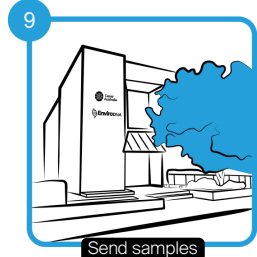
Snap swab to fit
Snap the swab stick at a length that fits within the preservative tube when replacing the tube cap



Seal sample
Firmly tighten preservative cap and repeat sampling process if required for replicate samples/swabs



Site label
Place samples into kit and fill out site label. Ensure all details have been filled out (site, date, GPS co-ordinates)



Send samples
Once replicates and sampling is complete, send to EnviroDNA: Level 1, 95 Albert Street, Brunswick VIC 3056

There are two methods of scat sampling available. Please speak with your EnviroDNA Project Manager to discuss your options.

Environmental DNA Scat Sampling Instructions (Paper bag method)

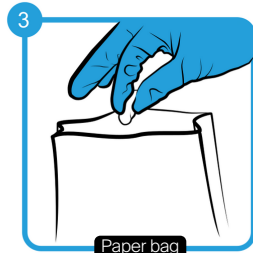
Before you begin, please note that scats are a potential source of harmful pathogens. Wear gloves and wash your hands thoroughly after handling scats.



Put gloves on



Carefully pick up selected scat sample from your site



Place sample in brown paper bag



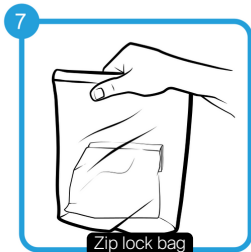
Fold top of bag over several times and staple top of the bag closed



Write sample information on front of bag (sample ID, coordinates and other relevant meta data)



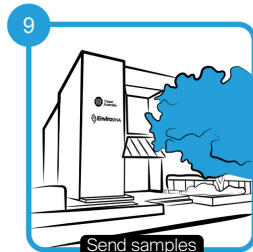
Dispose of gloves (Note - each sample will need a new pair of gloves and a new paper bag)



Place all individual paper bags into a zip lock bag, seal and write which samples are inside on the front of the bag



Store your samples at -20°C in an esky with ice packs



Once sampling is complete, send to EnviroDNA:
Level 1, 95 Albert Street,
Brunswick VIC 3056

There are two methods of scat sampling available. Please speak with your EnviroDNA Project Manager to discuss your options.