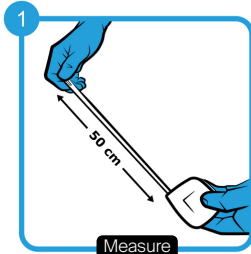


Environmental DNA Soil Sampling Instructions

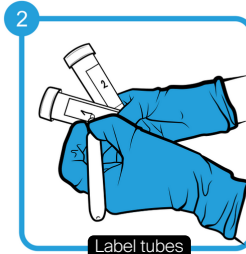
Equipment:

- Measuring tape
- Small shovel or corer
- Pegs to mark sampling area



Measure

Measure a 50m transect grid and use pegs to mark corners of sampling area



Label tubes

Put gloves on, open kit and label sample tubes with replicate numbers (1, 2 or 3)



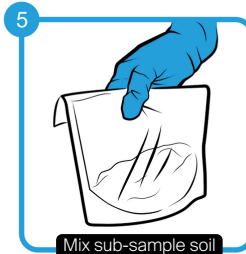
Dig

Remove surface litter at sampling area and use shovel to dig 10cm deep



Collect soil

Collect soil and pour the soil into the mixing bag provided in sampling kit



Mix sub-sample soil

Collect up to 20 sub-samples across marked area and soil together in the bag



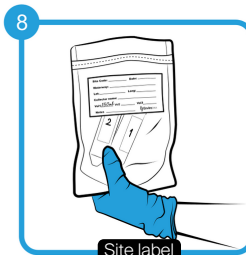
Take sample from bag

Once soil is mixed, take your replicate samples from the kit bag (1, 2 or 3)



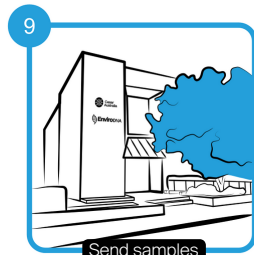
Pour out mixed soil

Pour the soil out of the mixed bag back into the sampling area



Site label

Place samples into kit and fill out site label. Ensure all details are filled out (site, date, GPS co-ordinates)



Send samples

Once replicates and sampling is complete, send to EnviroDNA:
Level 1, 95 Albert Street,
Brunswick VIC 3056