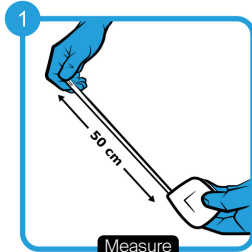


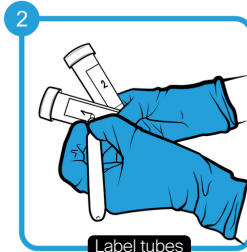
Environmental DNA Soil Sampling Instructions

Equipment:

- Measuring tape
- Small shovel or corer
- Pegs to mark sampling area



1
Measure
Measure a 50m transect grid and use pegs to mark corners of sampling area



2
Label tubes
Put gloves on, open kit and label sample tubes with replicate numbers (1, 2 or 3)



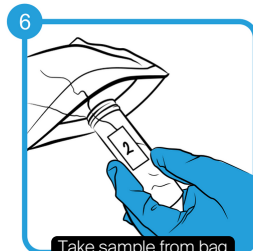
3
Dig
Remove surface litter at sampling area and use shovel to dig 10cm deep



4
Collect soil
Collect soil and pour the soil into the mixing bag provided in sampling kit



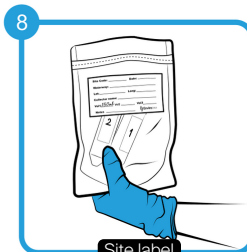
5
Mix sub-sample soil
Collect up to 20 sub-samples across marked area and soil together in the bag



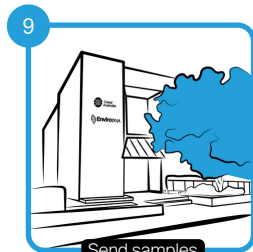
6
Take sample from bag
Once soil is mixed, take your replicate samples from the kit bag (1, 2 or 3)



7
Pour out mixed soil
Pour the soil out of the mixed bag back into the sampling area



8
Site label
Place samples into kit and fill out site label. Ensure all details are filled out (site, date, GPS co-ordinates)



9
Send samples
Once replicates and sampling is complete, send to EnviroDNA:
Level 1, 95 Albert Street,
Brunswick VIC 3056