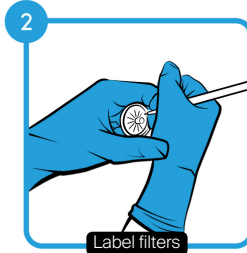


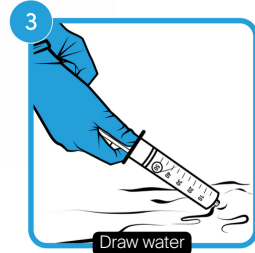
Environmental DNA Water Sampling Instructions



Open the sampling kit and put the gloves on



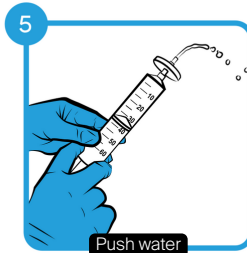
Label filter disc with replicate numbers (1, 2 or 3)



Take out syringe and draw 50 mL of water from sampling site



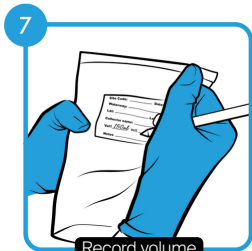
Take filter labelled 1, and screw onto syringe



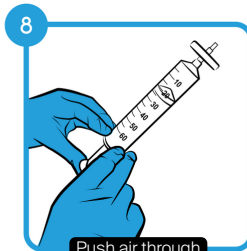
Push water in syringe through the filter



Remove filter and repeat steps 3, 4, 5 & 6 until filter is clogged



Record total volume of water pushed through filter onto kit site label



Remove filter and draw air into syringe. Screw filter and push air to dry it out



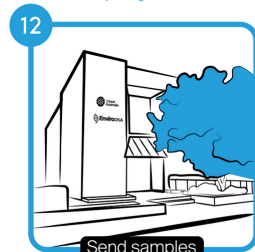
Take preservative and attach to filter. Push through and leave syringe attached



Place preservative cap onto the other end of the filter to seal the sample



Put the filters inside the sampling kit and fill out site label information



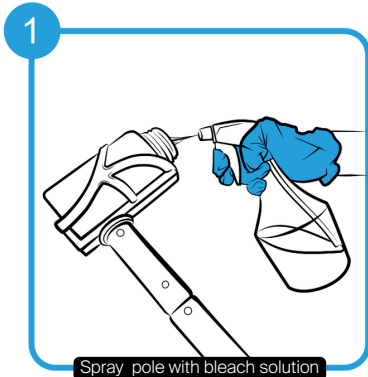
Once replicates and sampling is complete, send to EnviroDNA: Level 1, 95 Albert Street, Brunswick VIC 3056

Additional Sampling Pole Instructions

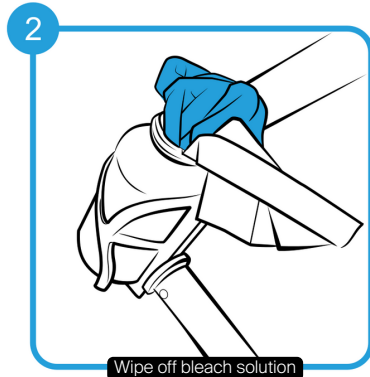
Equipment:

- Sampling pole and bottle
- Paper towel
- Spray bottle with 1:10 bleach/water solution

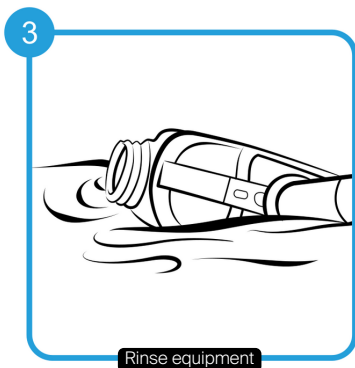
Before you begin, please note when you reach your next site, repeat these sterilisation steps to ensure there is no contamination between sites. However sterilisation is not necessary between replicate samples at the same site.



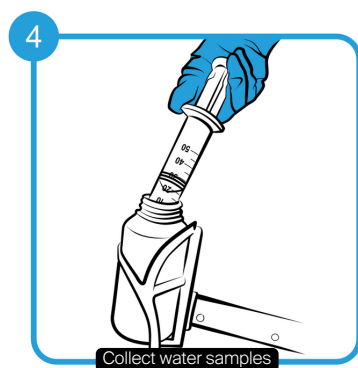
Spray the part of the sampling pole that touched the water with bleach/water solution



Use paper towel to wipe excess bleach mixture off



Rinse equipment 2-3 times with water from the site to remove residual bleach (note - rinse downstream from proposed site)



Fill bottle with water from the site and then draw up water from the bottle with syringe to take the sample. Follow steps on reverse side